



Vetenskapsrådet

Gender equality work at the Swedish Research Council

Carl Jacobsson

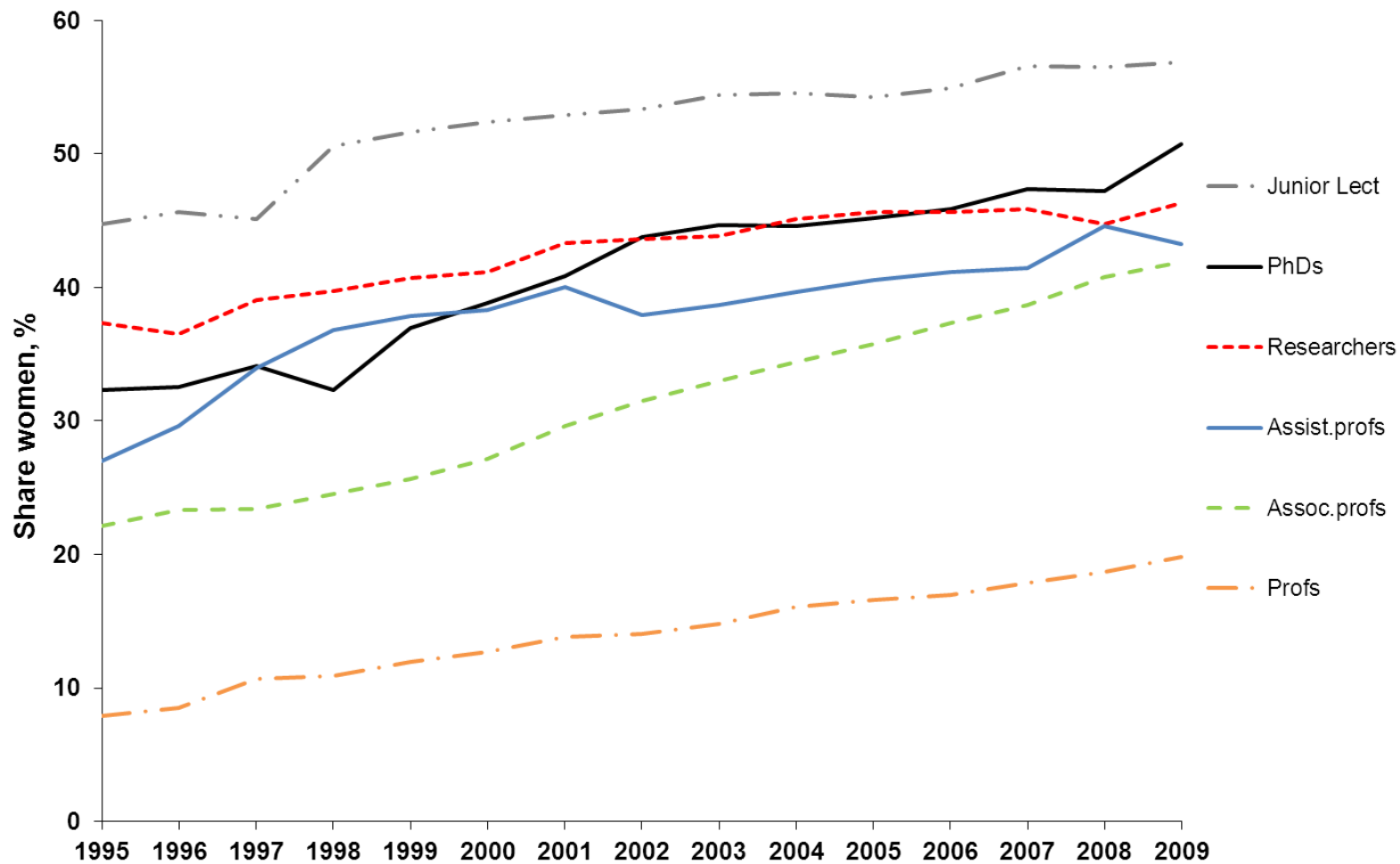
Dept. of Research Policy Analysis

Swedish Research Council

GenSET Capacity Building Workshop

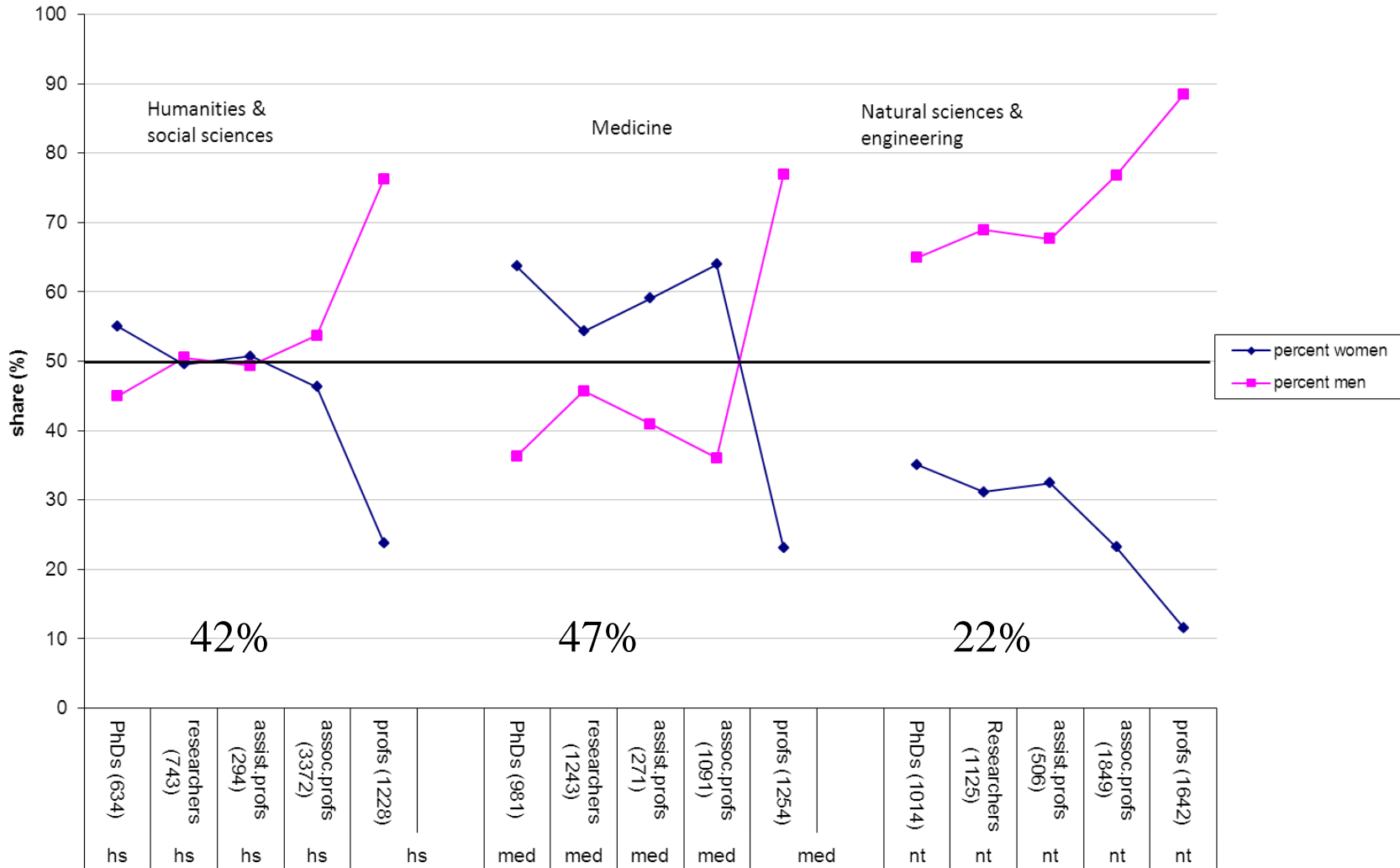
Linköping, March 28, 2011

Percentage of women in different academic positions and among new PhDs in Sweden 1995-2009



Data: Swedish National Agency for Higher Education

Percentage of women in different academic positions and subject fields in Sweden 2009 (excl. agricultural sciences)



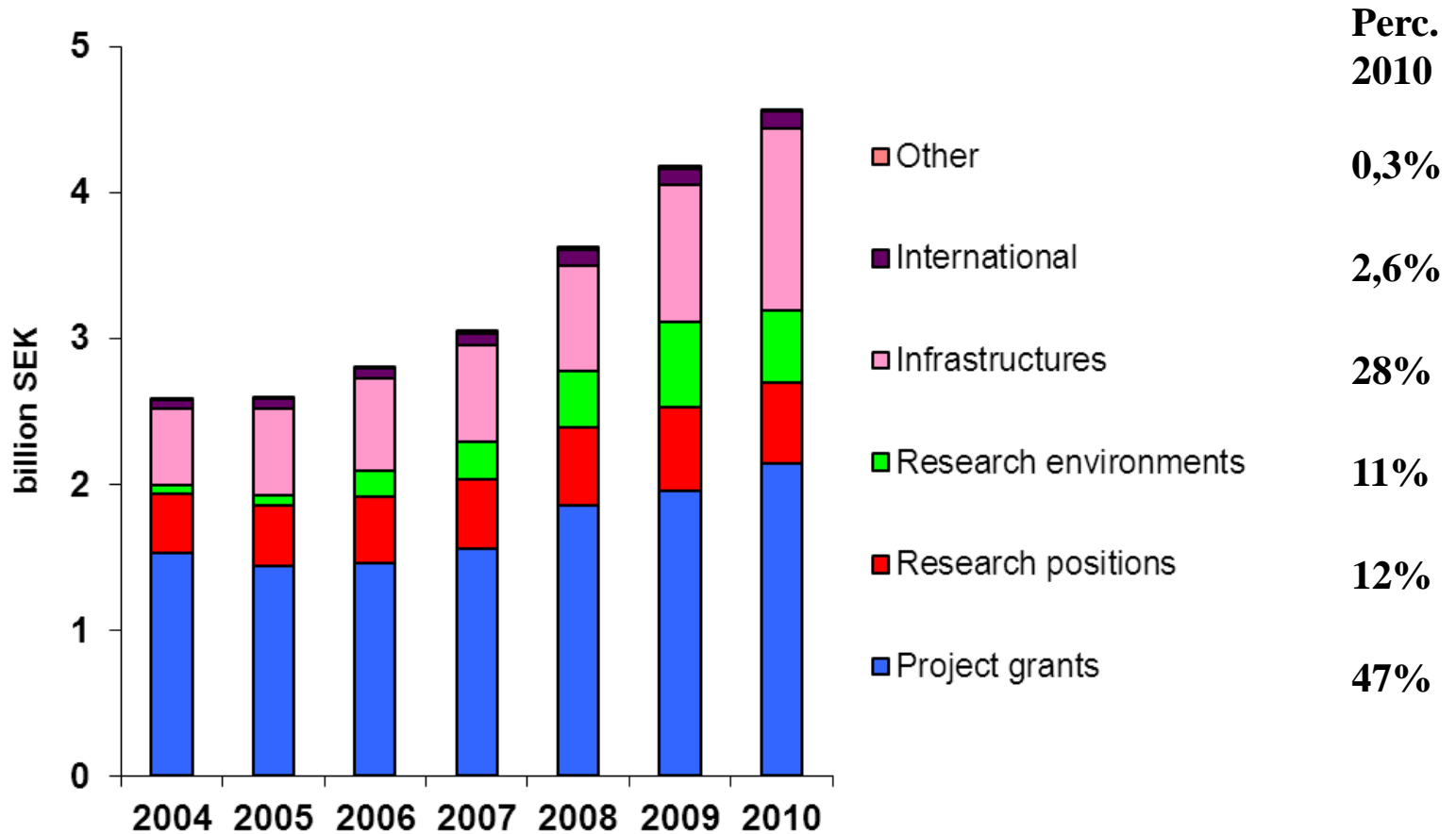
Data: Swedish National Agency for Higher Education



Swedish Research Council

- Supports basic research in all disciplines
- A Board, a DG, plus Scientific Councils for
 - Humanities and social sciences
 - Medicine and health
 - Natural and engineering sciences
 - Research infrastructures
 - Educational sciences (committee)
- Annual budget 4.5 billion SEK (500 M €)
- Receives about 5000 applications annually
- About 60 peer review groups

SRC's research funding 2004-2010 by type of funding grant





Swedish Research Council's strategy for gender equality

Task:

SRC shall promote gender equality throughout its sphere of activities

Operative goals:

SRC shall

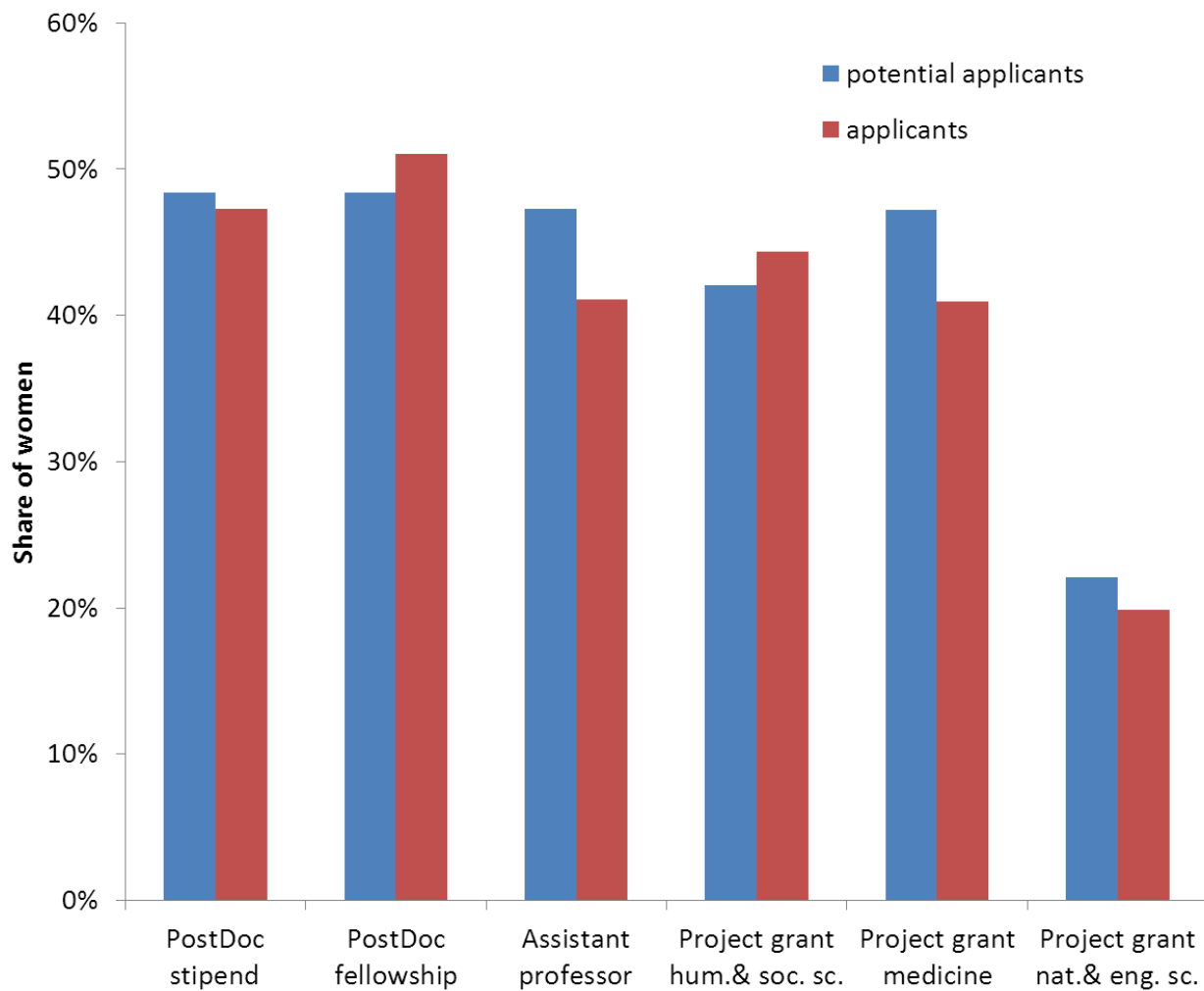
- achieve and maintain gender balance in its peer review groups
- ensure that women apply for research support from the council “as often” as men do
- have the same success rates and the same average amount granted for women and men, taking into account the nature of the research and the type of grant



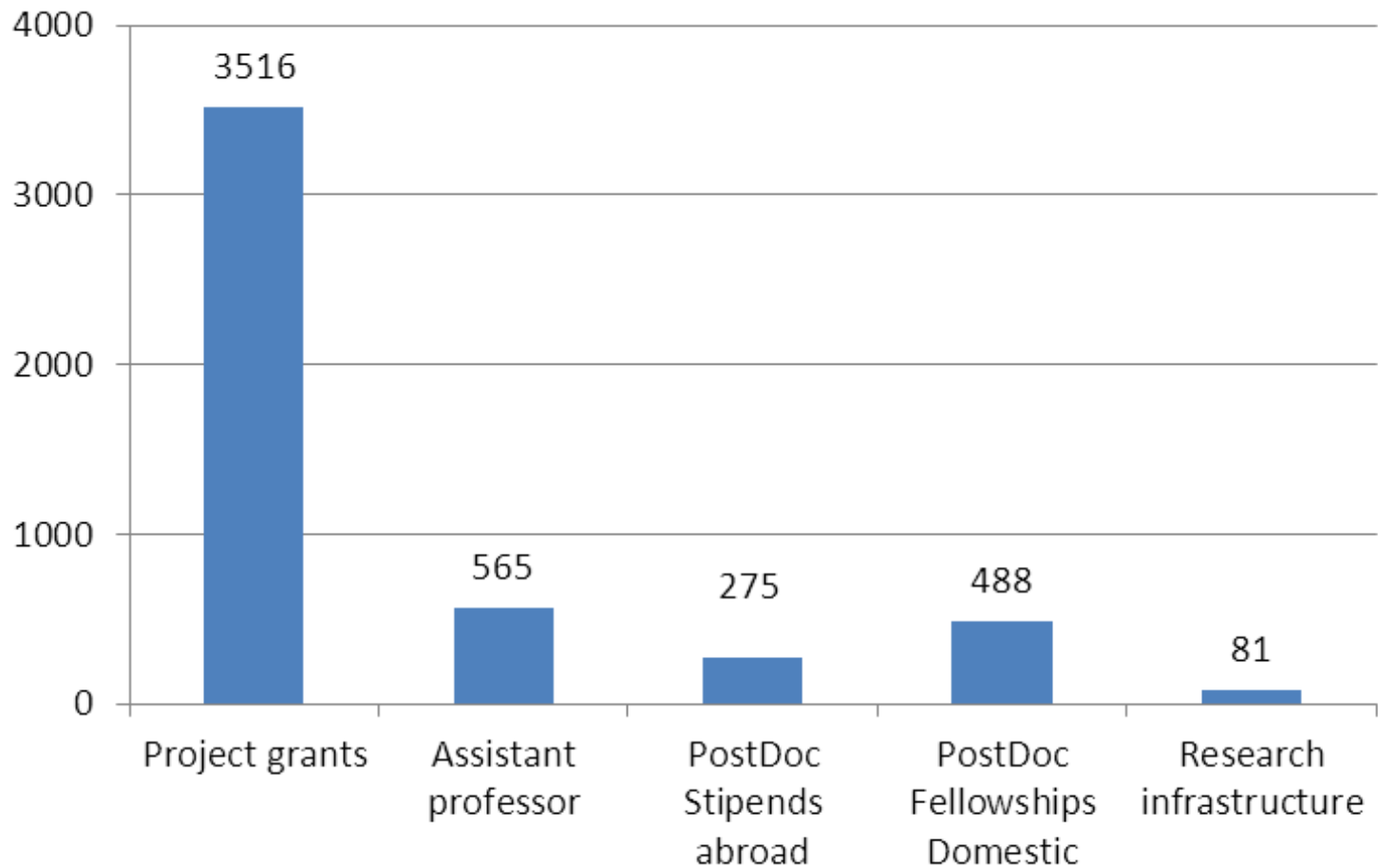
What can be done to fulfill the operative goals?

- Monitoring the success rates etc. is in itself an important measure
- If the operative goal of equal success rates is not fulfilled by a Scientific Council, then the Scientific Council must present an explanation and a plan of action to the Board
- A new such action plan includes (short) gender equality education to peer review groups and gender equality observers in some peer groups

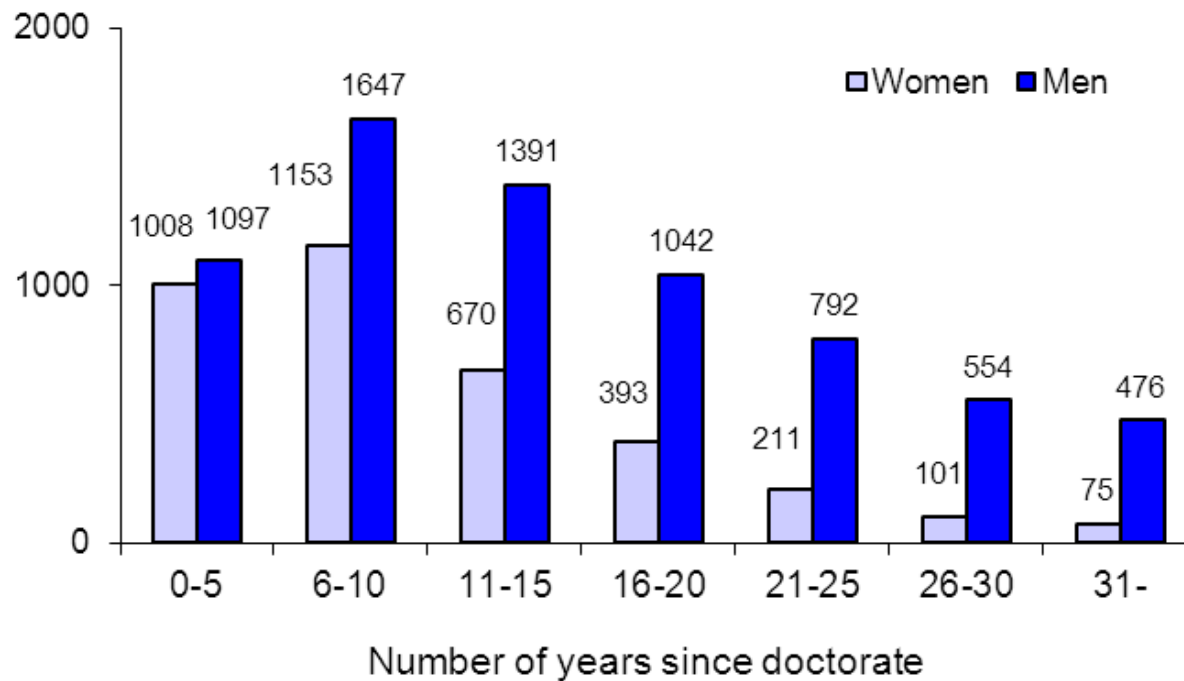
Share of women among potential applicants and among applicants to the SRC 2010



Number of applications to main types of grants 2010

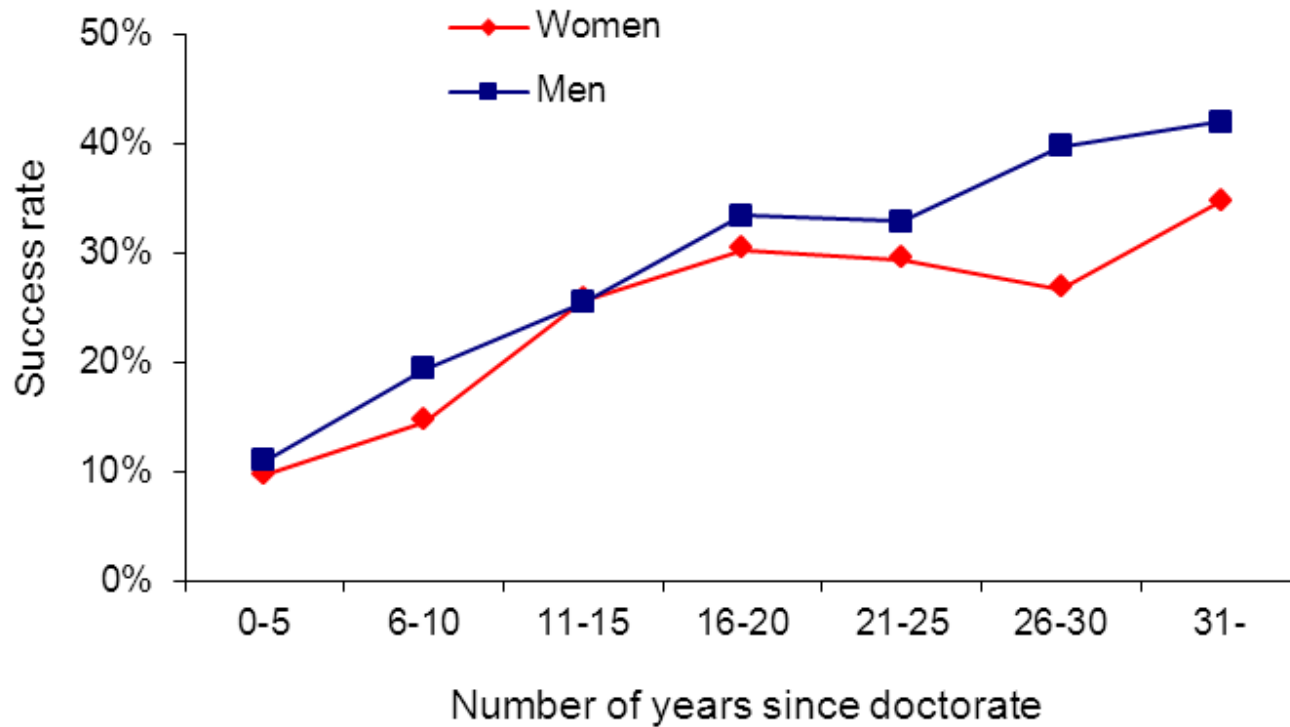


Number of project grant applications 2008-2010 to the SRC by gender and years since doctorate

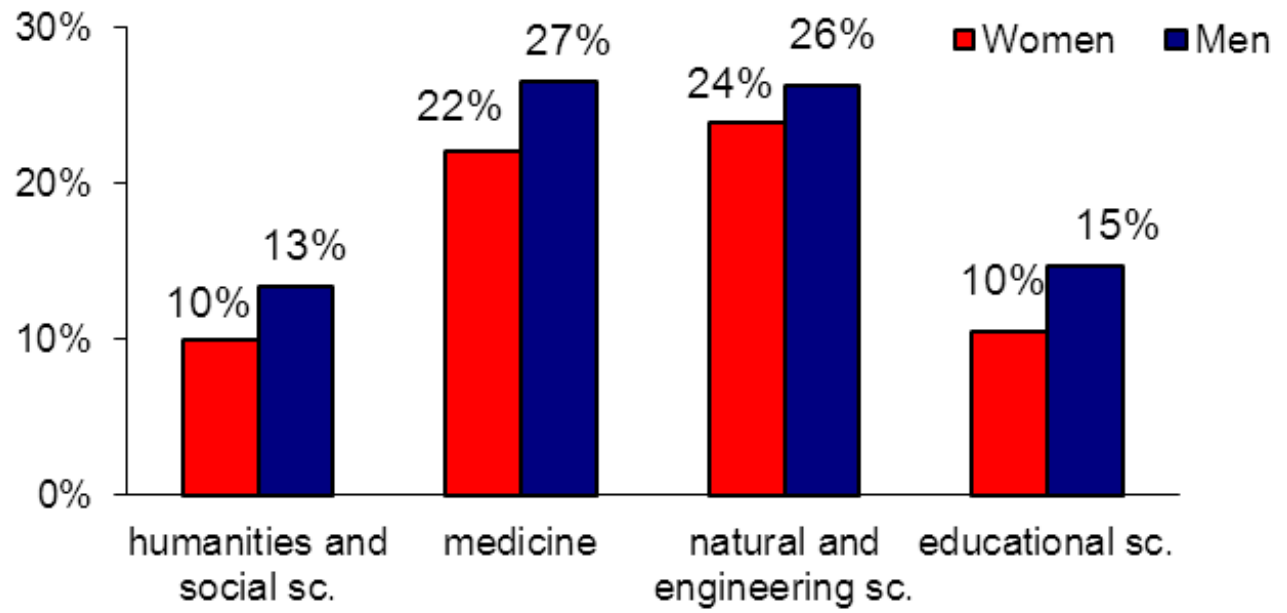


Applications 2008-2010: from women 3 611, men 6 999, sum 10 610 (34% women)

Success rates for project grant applications to SRC 2008-2010 by number of years since doctorate



Project grants 2010, success rate by scientific council and gender (applicants with PhDs only)



Appl. from women	399	417	268	134
Appl. from men	501	602	1079	116

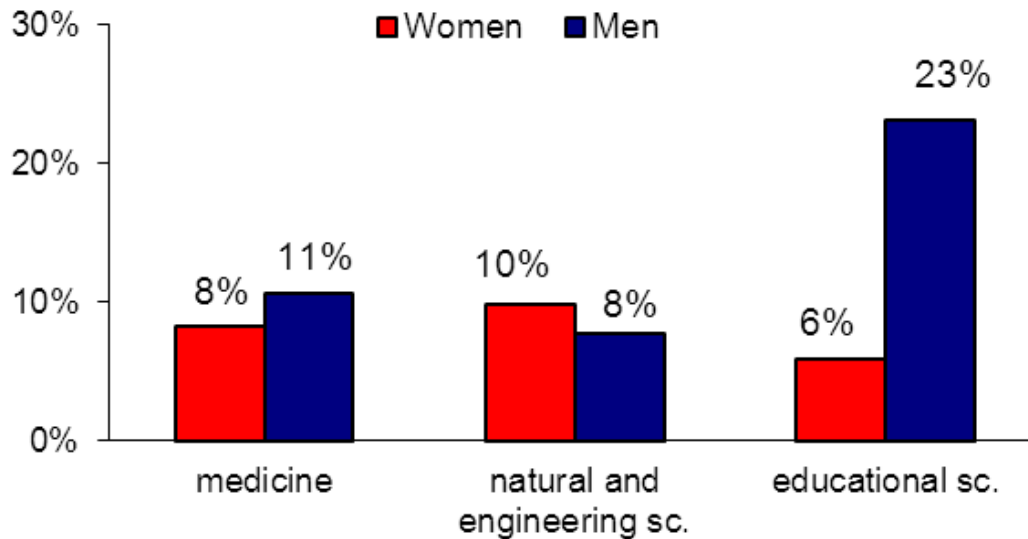
Applications 2010: from women 1 218, men 2 298, sum 3 516 (35% women)

Project grants 2010: granted and expected granted applications by gender and council

	Women		Men		Difference (women)
	Granted	Expected	Granted	Expected	
HumSoc	40	44.8	67	62.2	-4.8
Medicine	92	89.6	160	162.4	2.4
NatEng	64	64.6	284	283.4	-0.6
Educat	14	17.0	17	14.0	-3.0
Total	205	211.8	520	513.2	-6.0

Probability is 63% that the total difference (or bigger) occurs by “chance”

Assistant professors 2010 success rate by scientific council



Appl. from women	144	71	17
Appl. from men	113	207	13

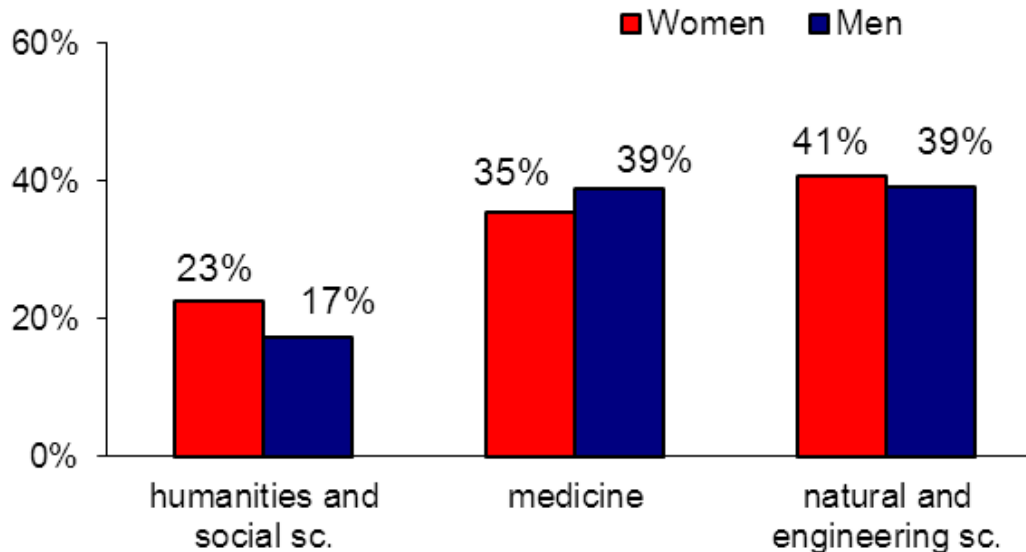
Expected granted appl. 2010: women 21.6 men 29.4

Granted applications 2010: women 20 men 31

i.e., **1.6 fewer applications from women** granted than expected

Probability that such a difference (or bigger) occurs by "chance" is 65%

Postdoctoral stipends, abroad, 2010 success rate by scientific council



Appl. from women
Appl. from men

31
29

62
41

32
74

Educational sciences: women 5 appl. (0 granted) , men 1 appl. (1 granted)

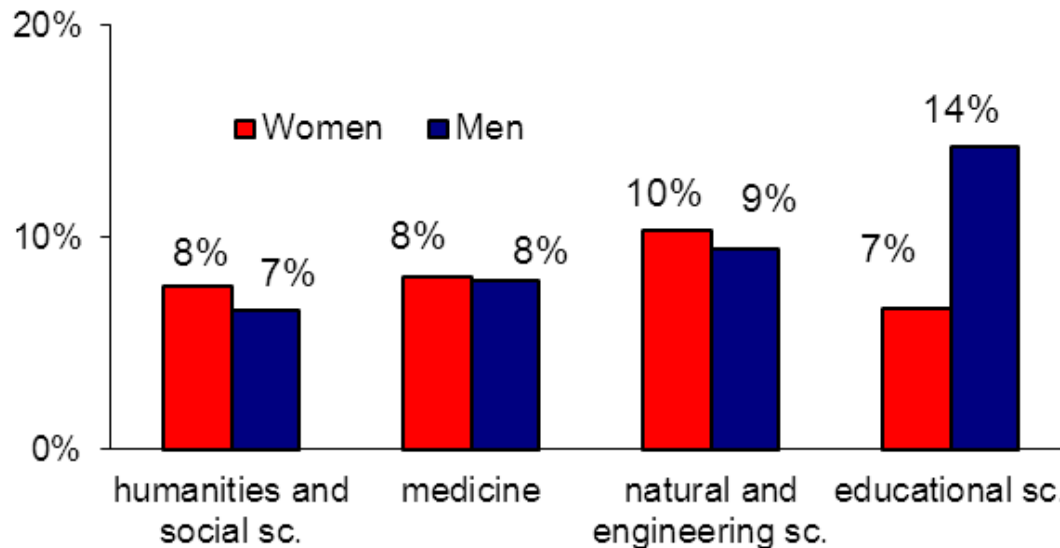
Expected granted appl. 2010: women 42.6 men 50.4

Granted applications 2010: women 42 men 51

i.e., **0.6 fewer applications from women** granted than expected

Probability that such a difference (or bigger) occurs by "chance" is 90%

Postdoctoral fellowships, domestic, 2010 success rate by scientific council



Appl. from women	78	98	58	15
Appl. from men	76	50	106	7

Expected granted appl. 2010: women 20.5 men 20.5

Granted applications 2010: women 21 men 20

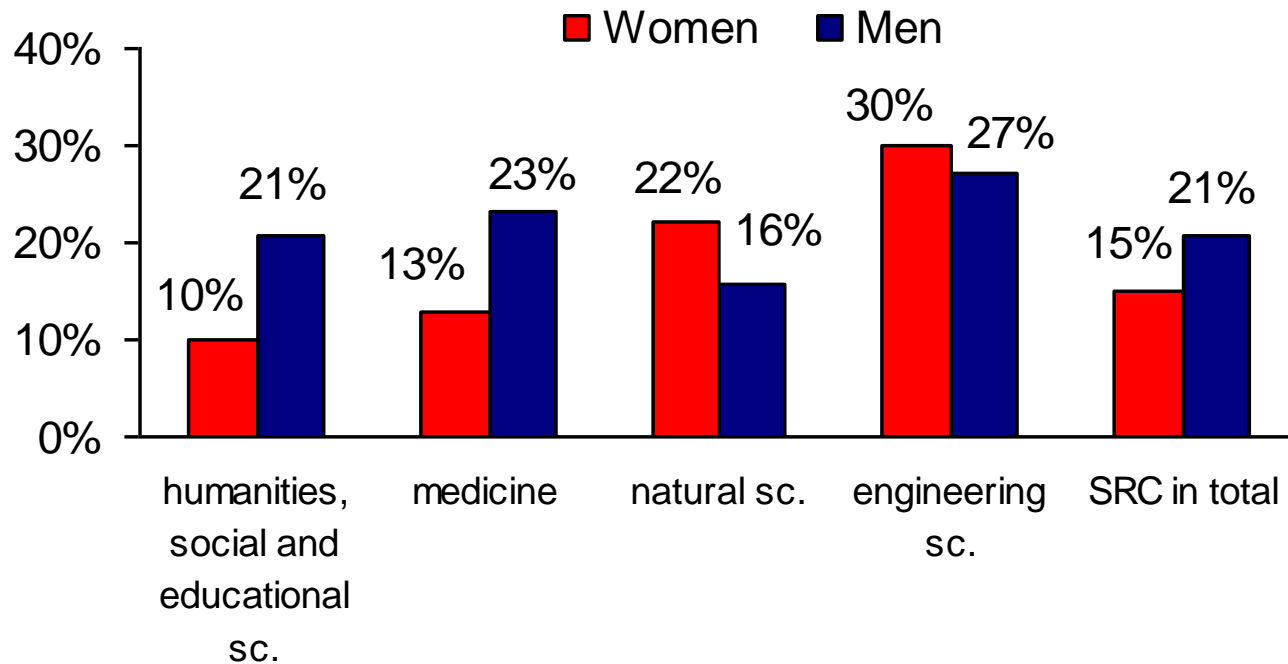
i.e., (<) **0.5 more applications from women** granted than expected

Probability that such a difference (or bigger) occurs by "chance" is 100%



**Linnaeus research environment grants
2006 and 2008**

Linnaeus research environment grants 2006 success rates by gender

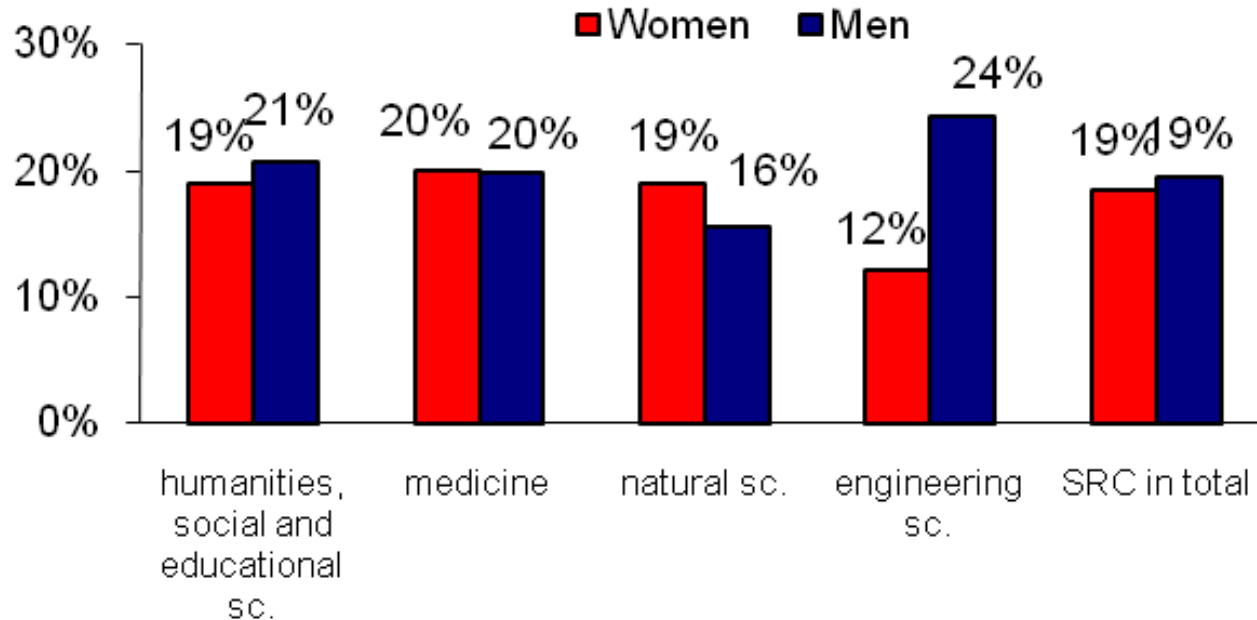


Appl. from women	91	47	54	10	202
Appl. from men	179	171	273	125	748

Percentage of women in **all** applications: 21.3%

Percentage of women in **granted** applications: 16.3%

Linnaeus research environment grants 2008 success rates by gender

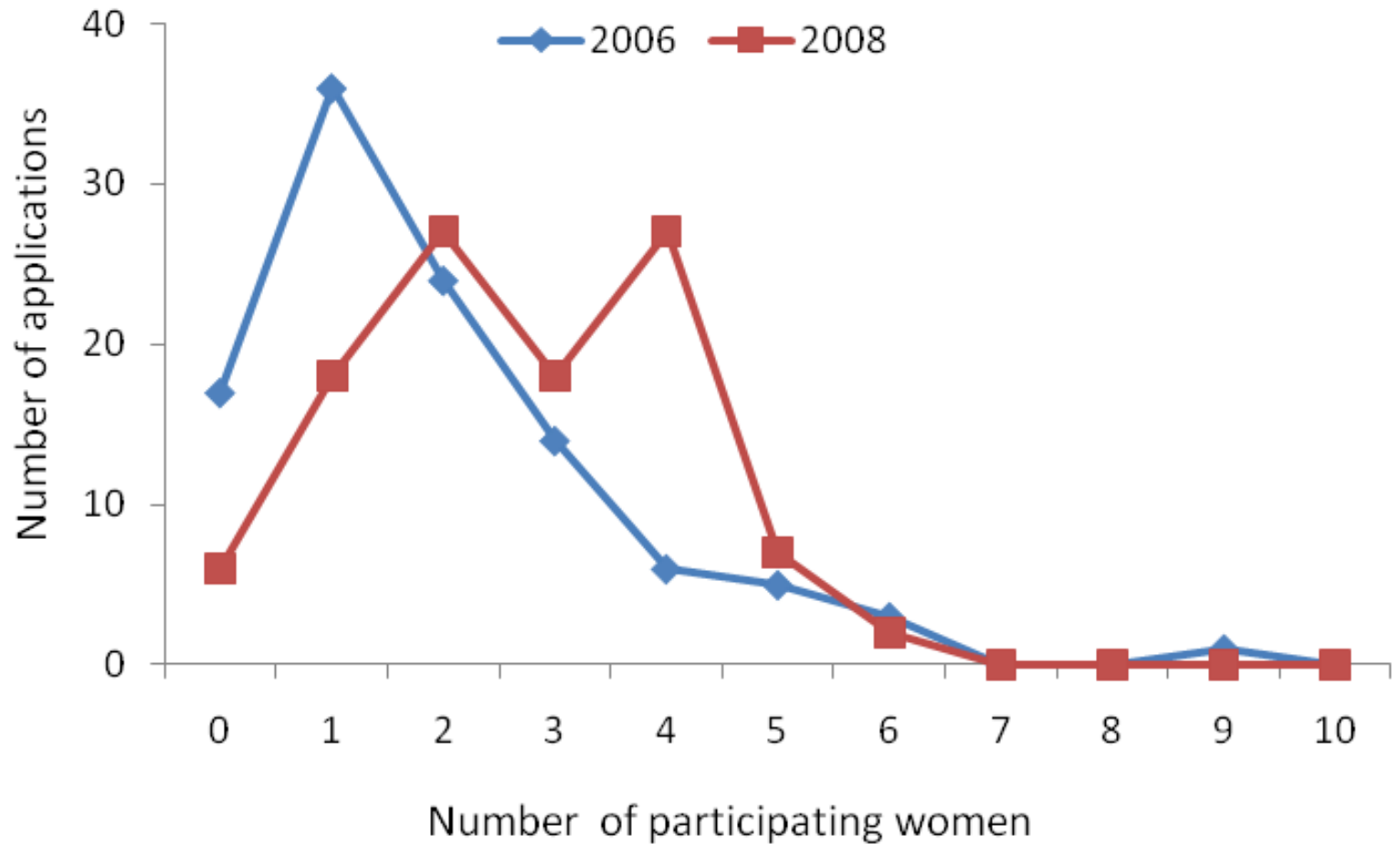


Appl. from women	84	80	84	33	281
Appl. from men	140	146	256	148	690

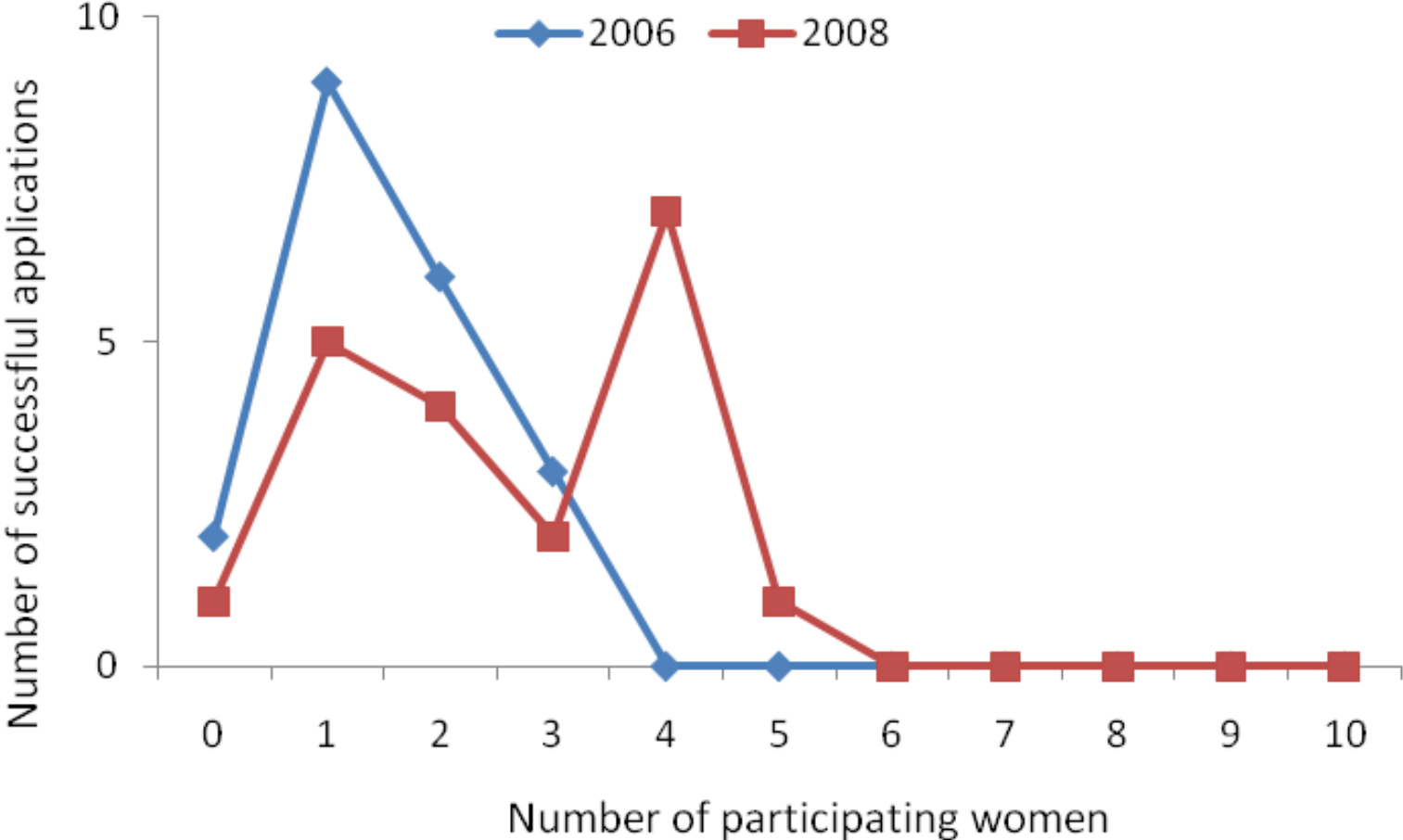
Percentage of women in **all** applications: 28.9%

Percentage of women in **granted** applications: 28.0%

Linnaeus grants 2006 and 2008 applications by number of participating women



Linnaeus grants 2006 and 2008: granted applications by number of participating women





The End